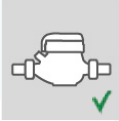



2018
NEW
INDUCTIVE
MULTI JET
WATER METERS



GMDM-I

New dry dial water meter derived from the previous GMDM version

- Inductive target installed on the 1 liter index for the entire range of sizes (DN15-DN50)
- Coupling device for PULSE output module, WMBUS module, MBUS module
- MID Range 100H or 160H, **50V**  
- Hot Water version 100H/50V available
- **PN32 resistant** polycarbonate top glass (BPA free)



GMDM-I

(changes introduced by the new model to the product range)

mod. GMDM



mod. GMDM-R



mod. GMDM-RFM



From March 1st 2018

All replaced by a single new model

mod. GMDM-I



GMB-I

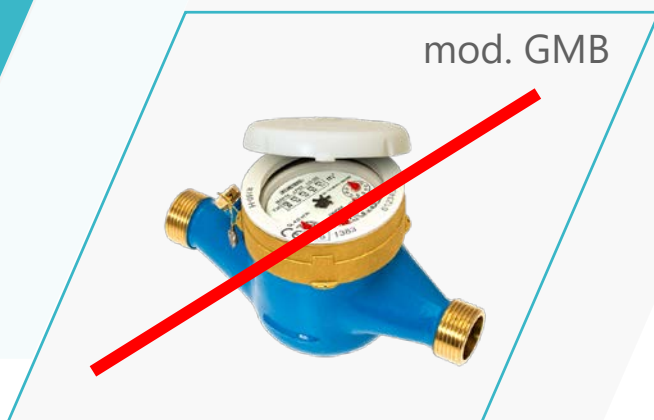
New wet dial water meter based on the previous GMB version

- Inductive target installed on the 1 liter index for the entire range of sizes (DN15-DN50)
- Coupling device for PULSE output module, WMBUS module, MBUS module
- MID Range 100H or 160H
- **PN32 resistant** polycarbonate top glass (BPA free)



GMB-I

(changes introduced by the new model to the previous product range)



From March 1st 2018



IWM communication modules

Inductive Water Modules



IWM-PL
electronic pulse
output module



IWM-WMBUS
wireless M-BUS
module



IMW-MBUS
wired M-BUS
module

IWM-PL

Electronic Pulse output module



- 3 coils inductive sensor (for direction detection)
- Magnetic tampering detection
- Smart anti-tampering alarm (no mechanical switch)
- NFC configuration (using mobile App)
- IP68 full resin protection



IWM-PL

Electronic Pulse output module



4 wires: Open collector output type
(polarization MUST be respected)



WHITE: NO contact: it closes at every index complete rotation (no direction detected), same functioning of an electromechanical reed switches.

YELLOW:NC contact: it opens when a module removal attempt, a tamper attempt, a magnetic tamper attempt or cable cut occur

GREEN: NO contact: defined as 3rd wire, it can be configured between 3 functions (mutually exclusives):

- Absolute counting: it counts the consumed flow and in case of backward flow it does not restart the forward counting until the backward value has been compensated for
- Backward counting, it counts the backward flow
- Dosing: a value greater than 1 liter can be set as dosing threshold (i.e. 56 liters: the pulse signal will be sent every 56 measured liters)
- BROWN: Earthing

IWM-PL

Electronic Pulse output module



NFC configuration App V1.0 (supports only IWM-PL)

- Contactless technology available on the latest generation smartphones
- Dedicated App (FOR ANDROID OPERATING SYSTEMS)
- Configuration of:
 - [K] Liter ratio assigned to the index (where the inductive target is installed) 1L, 10L, 100L based on the water meter type
 - [X] Pulse output ratio, a multiple of the K values 1L, 10L or 100L previously assigned (i.e. 1, 5, 10, 25, 50...up to 1000 max)
 - [Y] Dosing Threshold value free selection from 1 up to 65536 liters 3rd wire function
 - Pulse duration [50ms to 300 ms] (default Value 100 ms, higher values should be assigned based on the signal emission frequency)
- Alarm recording (Tampering, Magnetic, wrong pulse duration setting)

APP NFC

State: **Fine lettura**

Indice K:

Peso Impulsivo X:

Peso Impulsivo Y:

Comportamento OUT3:

Durata impulso:

Allarmi:
Allarme Magnetico

LEGGI **SCRIVI** **BLOCCA**

IWM-TX

Wireless M-BUS radio module



- Inductive sensing with 3 coils (backflow detection)
- Magnetic tampering detection
- Smart tamper alarm (no mechanical switch)
- Leak detection alarm
- NFC configuration (using mobile App)
- IP68 full resin protection
- 25mW power transmission (500m line of sight)
- OMS compatibility Gen.3 (Gen. 4 under evaluation)
- 10+1 years battery life



IWM-MB

Wired M-BUS module



- 3 coils inductive sensor (for back flow detection)
- Magnetic tampering detection
- Smart anti-tamper alarm (no mechanical switch)
- Leak detection alarm
- NFC configuration (using mobile App)
- IP68 full resin protection
- Internal rechargeable battery (no replacement required)
- OMS compatibility



IWM NFC Configurator



NFC configuration App V2.0

supports all IWM modules:

IWM-PL

IWM-WMB

IWM-MB



About Us

B METERS is an Italian company that has been designing, producing and distributing instruments and solutions for measuring the consumption of water and energy used for heating and cooling, for over 25 years.

The yearly production currently exceeds 2,000,000 units putting B METERS in a leading position both at national and European level.

for additional info visit
bmeters.com

