

BR15

BRIT THERM

Installation & Operating Instructions



Please read these instructions carefully before installation



636199

Contents

General Information.....	3
Pump Liquid & Operating Conditions.....	4
Pump Diagram.....	5
Installation.....	6, 7
Fault Finding.....	8, 9
Maintenance & Repair.....	10, 11
Guarantee Registration.....	12

General Information

These instructions guide you through the installation and operation of this **BritTherm™** Circulator. The **Bronze Edition** is a high efficiency Bronze Secondary Hot Water Circulator which is perfectly suited to operate in:

- Single zone Hot Water systems
- Multi zone Hot Water systems

The Pump incorporates 3 constant speeds enabling you to set it based on system demand.

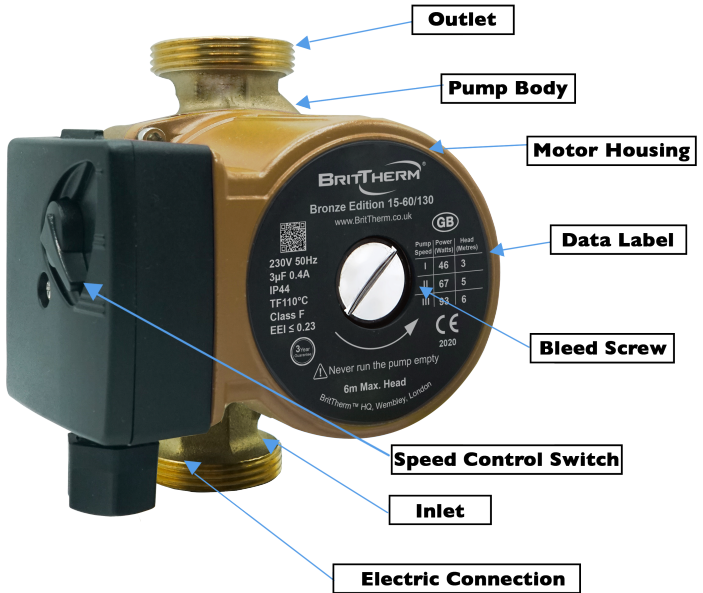
It has a connection size of **1 ½"**, a maximum head of **6 metres** and a port to port distance of **130mm** making it perfect for domestic applications.

Pump Liquid & Operating Conditions

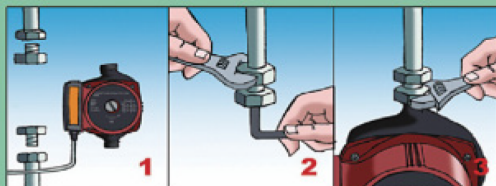
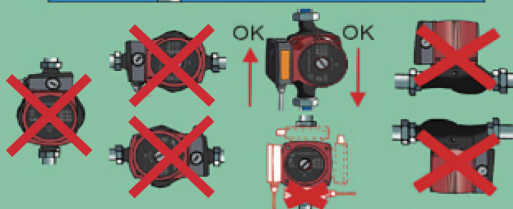
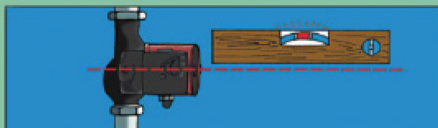
BritTherm™ pumps require clean, thin, non-aggressive liquids to operate correctly and prevent damage to their internal components. The liquids used must not contain any solid particles, fibres or mineral oil.

Liquids running through circulation pumps must comply with the accepted standards of quality especially in domestic applications. Liquids that do not comply will void the warranty offered with this Pump.

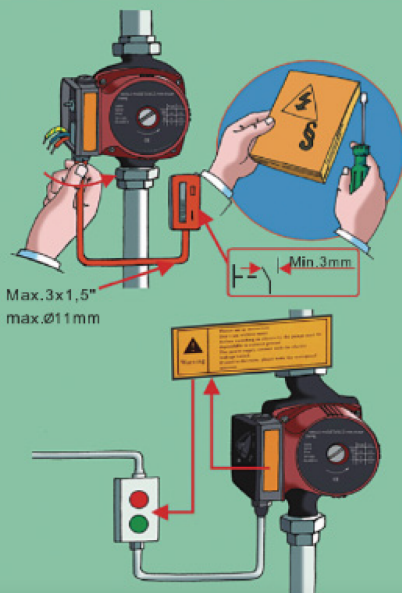
Pump Diagram



Installation



Attention: Ensure the pump is installed with the Control Box on the left



Attention: Fit the two gaskets when the pump is mounted correctly between the flow and return pipes

Fault Finding



Before starting any work on the pump please ensure the electricity supply is turned off and cannot be accidentally switched back on at any time

Fault

Pump doesn't run

Cause

Remedy

A) Blown fuse

Replace fuse

B) Inadequately connected power supply

Check electrical connection

C) Pump is defective

Replace pump

D) Impurity in the system

Disconnect and clean

E) Bearing has blocked pump from running

Run at high speed for a for a short period or loosen the rotor at the end of the shaft with a screwdriver

Fault

Noise in the system

Cause

A) Air in the system

B) Pump speed too high

Remedy

Vent the system

Reduce the speed

Fault

Noise in the pump

Cause

A) Air in the pump

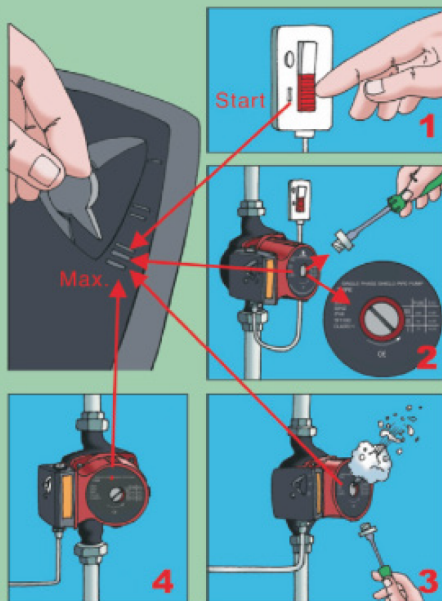
B) Inlet pressure too low

Remedy

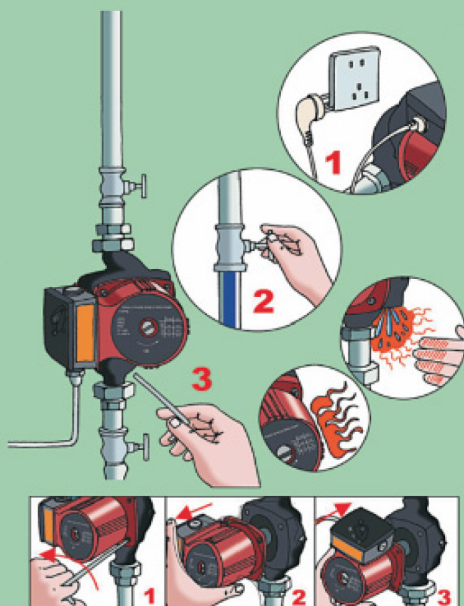
Let the pump run, it vents itself over time

Increase the inlet pressure

Maintenance & Repair



Attention: Ensure the pump is fully vented before first time operation



Attention: The pump liquid may be scalding hot and under high pressure. Before removing head screws the system either requires draining, or the pump needs to be isolated

Guarantee Registration

This Pump is covered against manufacturing malfunction by a 3 year guarantee. The guarantee is only valid if the pump has been installed correctly, the system is maintained adequately, and the guarantee is registered within 30 days of purchase.

The pump is covered for a free of charge replacement should malfunction occur within the first 3 years from the date of sale.

To register go to www.BritTherm.co.uk and click

Register a Guarantee

You will need:

- Date of purchase
- Address where pump is fitted
- Name of supplier
- Supplier invoice number

Please retain your purchase invoice as it may be required in the event of a guarantee claim.

To make a claim please contact BritTherm by email in the first instance: info@BritTherm.co.uk



**UK
CA**