

Boiler Condensate Pumps

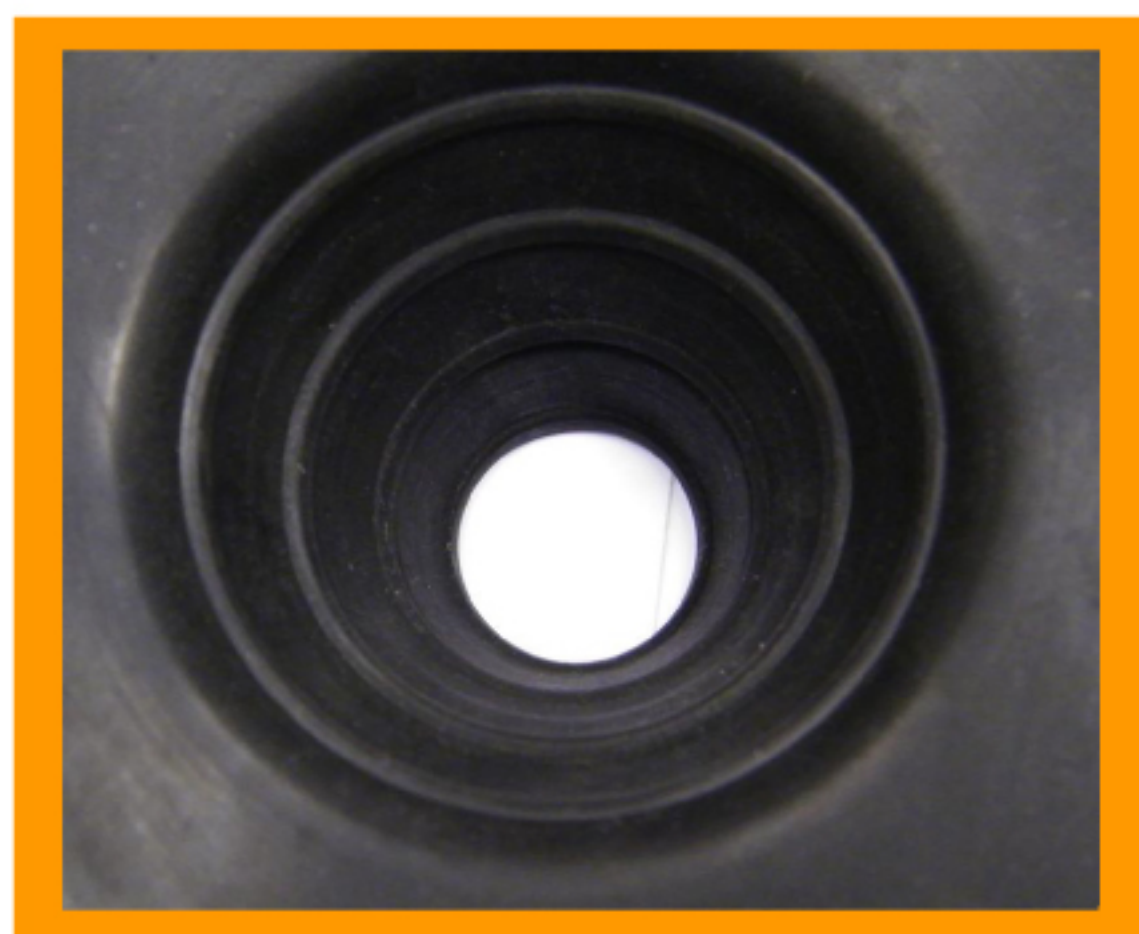
PRODUCT DATA SHEET Soak Away Kit



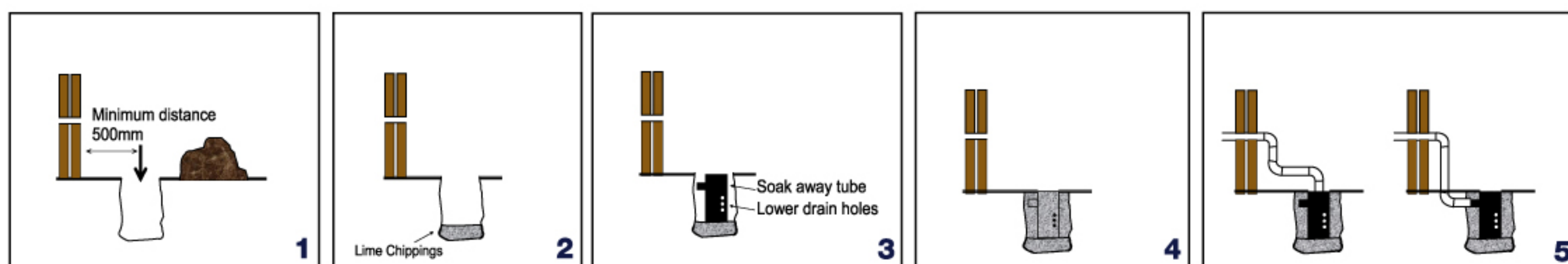
Where a suitable gravity drain point is not available the soak away should be used in conjunction with 10 mm Lime Chippings. Alternatively installation of a Pump House boiler condensate pump can be considered.

Compatible with the following pipe sizes:

- 22 mm (3/4") OVERFLOW
- 32 mm (1-1/4")
- 40 mm (1-1/2")



INSTALLATION STEPS



1. Dig hole (min depth) 400mm x 300mm diameter at least 500mm from the wall.
2. Fill the bottom of the hole with 100mm of lime chippings.
3. Insert soak away tube with lower drain holes facing away from the property.
4. Fill the remaining part of the hole & tube with lime chippings.
5. Fill the pipework either into the top or through the side of the soak away.

Made from
RECYCLED
polypropylene

Pump House
Glaisdale Drive East, Nottingham, NG8 4LY
Tel ~ 0115 900 5858 Fax ~ 0115 929 4468

Email ~ sales@pumphousepumps.com Website ~ www.pumphousepumps.com

