

The Fastest and Simplest Pipe Repair

Stop a leak becoming a flood – Put a **Kibosh** on it™



Introducing the
NEW Kibosh
FASTFREEZE
system



Index

1. Welcome
2. History/Kibosh story
3. History/Kibosh story
4. **Rapid Pipe Repair Clamp**
5. *How it works*
6. *Rapid Pipe & Leak Repair Kit*
7. *Frequently asked questions*
8. *Frequently asked questions cont.*
9. *Product details*
10. **The Kibosh FASTFREEZE™ kit**
11. *How it works*
12. *Frequently asked questions*
13. *Product details*
14. *Product details*
15. *Product details*
16. Accreditations and Awards

Bish,
Bash,
Kibosh™

Welcome to Kibosh™

We are an ISO 9001 Certified Scottish company with a global business. We were founded by a time-served plumber, Ross Dickinson who is driven by a passion for developing simple solutions to pipe repair and pipeline sector related problems.

This year we launched our new range of pipe repair and maintenance products, including our new pipe freezing system – the Kibosh FASTFREEZE™ range.

We have also secured funding for final development and field testing of our industrial pipe repair clamps and high efficiency pipe freeze clamps. In these trials, we are partnering with The Net Zero Technology Centre and The University of Strathclyde's Advanced Forming Research Centre as well as world renowned industry partners Harbour Energy, Total, CNOOC International and Hydratight.

We are passionate about what we do, and we would love you to try our products and see for yourself the difference they make. Please let us know how you get on using our products. Please get in touch with any feedback. We would love to hear from you.



Ross Dickinson
Founder & CTO



Andy Peterson
CEO



Jill Notman
Office & Finance Manager

Kibosh™ History

Plumber Ross Dickinson was called out to fix a burst pipe in the winter of 2007. The homeowner could not turn the water off to the burst pipe because the shut-off valve was hidden in the garage. By the time Ross traced the pipe back and was able to turn the water off, there was already a significant amount of very costly water damage.



Ross got home and asked himself why there was no product widely available to stop the leak and get the situation under control. Then he had his eureka moment. The **Kibosh Rapid Pipe Repair Clamp** was born. Ross then took it upon himself to develop and patent the product. Kibosh Ltd was incorporated in 2009.

Ross developed prototypes of a pipe repair clamp with local tool making and injection moulding company, Cademuir Engineering. He developed the product which was tested by the British Standards Institute (BSI), and he patented the design, both in the UK and internationally.

Initially Ross sold the product himself and he used the success of wins from innovation awards and Kibosh social media platforms to build awareness of the **Kibosh Rapid Pipe Repair Clamp**.

The **Kibosh Rapid Pipe Repair Clamp** was then noticed by Rothenberger, a leading global plumbing tool and equipment brand. Ross entered into an agreement with Rothenberger UK to produce the Rothenberger Kibosh Emergency Pipe Repair, which is available in the UK & USA.

Rothenberger UK also went on to employ Ross in the role of Technical Manager, while Ross still remained as Managing Director of Kibosh Ltd.



Kibosh™ History

Sales of the **Kibosh Rapid Pipe Repair Clamps** quickly grew, and Kibosh also started to produce pipe freezing clamps, using the same IP, for Rothenberger for use in their Rofrost Rapid pipe freezing kits.

As international interest and sales grew, Ross also saw the opportunity to develop pipe repair and freezing products for the Oil & Gas and industrial markets. In 2015 Ross secured funding to start phase 1 of this development with the Oil and Gas Innovation Centre (OGIC) and Heriot Watt University.

In 2018 Ross secured further funding for a Phase 2 of development of Kibosh clamps for up to 6" pipes, again with OGIC and with the University of Strathclyde's Advanced Forming Research Centre (AFRC). This development was completed in 2019.

In 2019, Ross secured private equity funding for Kibosh from Par Equity, an Edinburgh based investment syndicate. This allowed Ross to leave Rothenberger and work full time at Kibosh.

We are currently working with The Net Zero Technology Centre (NZTC) in Aberdeen and secured funding for the final development phase of our industrial pipe repair and high efficiency pipe freezing clamps. In this project we will also be supported by world renowned Industry Partners, Harbour Energy, Total, CNOOC International and Hydratight.

In February 2021, we launched the new Kibosh brand, bringing to market our full range of pipe repair clamps and the NEW **FASTFREEZE** pipe freezing range. This represents the start of the next chapter in our history, and we hope you enjoy it as much as we do.

The **Kibosh**TM Rapid Pipe Repair Clamp

The #1 insurance claim in the UK and the US is for water damage, usually from burst or leaking pipes. According to the Association of British Insurers (ABI), the average claim for water damage from a burst pipe is £10,000*.

Pipes leak and burst for many reasons: freezing in winter, DIY accidents, accidental perforation by trades people when doing other tasks, poor fittings etc.

Whatever the cause, when a pipe bursts or starts leaking, damage starts immediately, and the longer it takes to stop the leak, the more costly the damage.

You may know where the mains water shut off-valve is located, but it is not always possible to access this valve, and often the valve does not work. If the leaking pipe is a central heating or tank fed pipe, the main shut off will have no effect.

Even if you are able to turn the water off, there is a new problem – no water for the house or even for a whole apartment block. The great benefit of Kibosh is that once it is fitted to a pipe and sealed, the water can be turned back on, allowing the pipe system to continue functioning at normal pressure, hot or cold, until a permanent repair can be arranged.

The **Kibosh Rapid Pipe Repair Clamp** is very simple and quick to use. It can stop leaks immediately, limiting and avoiding water damage and disruption, saving precious water and getting the situation under control.

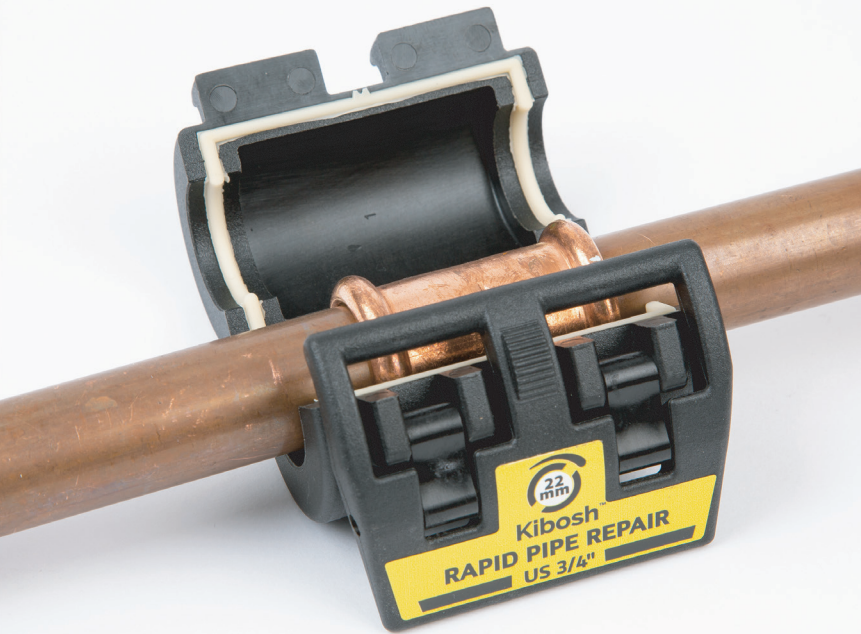


How it works

Kibosh Rapid Pipe Repair Clamp

five

2



1

Open the **Kibosh Rapid Repair Clamp** and fit it round the pipe, even over fittings.

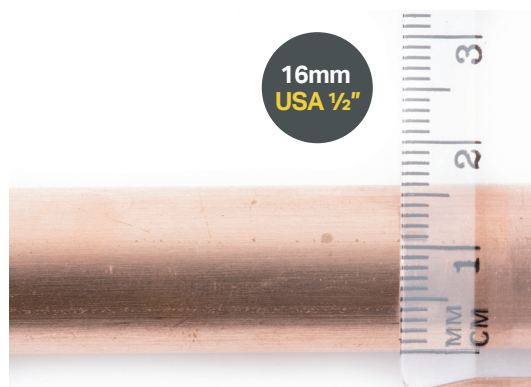
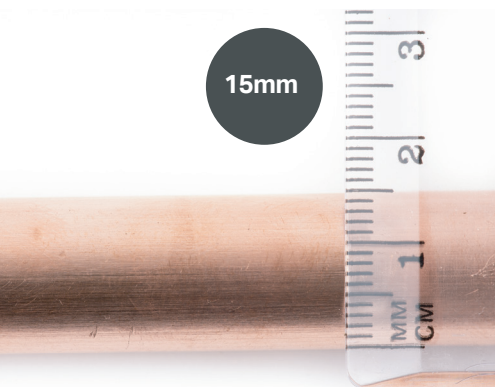


Close the clamp using the handle to snap it shut on metal, plastic and multi-layer pipes.

Bish, Bash, Kibosh - job done.

Available sizes

The **Kibosh Rapid Pipe Repair Clamp** comes in three sizes.



Rapid Pipe & Leak Repair Kit

UK, Metric System and North America



This kit comes in a bright robust orange case complete with a Kibosh of each size, for the two most common pipe sizes in UK & EU (1 x 15mm & 1 x 22mm) or North America (16mm/US 1/2" & 22mm/US 3/4").

The kit also comes with 2 x rolls of PTFE tape as an added extra, handy for leaky threaded fittings, valves etc.



Stop a leak becoming a flood, put a **Kibosh on it**™

Frequently asked questions

Which pipes does it work on?

The **Kibosh Rapid Pipe Repair Clamp** works on most types of pipe – metal, plastic, and multi-layer pipes.

Does it work on clipped pipes?

Yes. Just open the clamp, place the housing not attached to latch behind the clipped pipe, then slide it over the leak and clamp shut.

Can I turn the water or heating back on after it is fitted?

Yes, once fitted you can leave your water or heating pipe functioning at normal pressures, hot or cold.

Who should use the Kibosh?

The **Kibosh Rapid Pipe Repair Clamp** is ideal for anyone who could perforate a pipe accidentally with a nail, drill, jigsaw or any other sharp power or hand tool.

- It is an essential toolbox item for trade people: plumbers, joiners, builders, electricians, carpet fitters...
- It is perfect for maintenance and janitorial companies.
- It is ideal for DIY enthusiasts, some of whom have been known to damage pipes unintentionally.
- It is also a "must have" for all homeowners as the pipes in their house may leak or burst.

How long can I leave it on for?

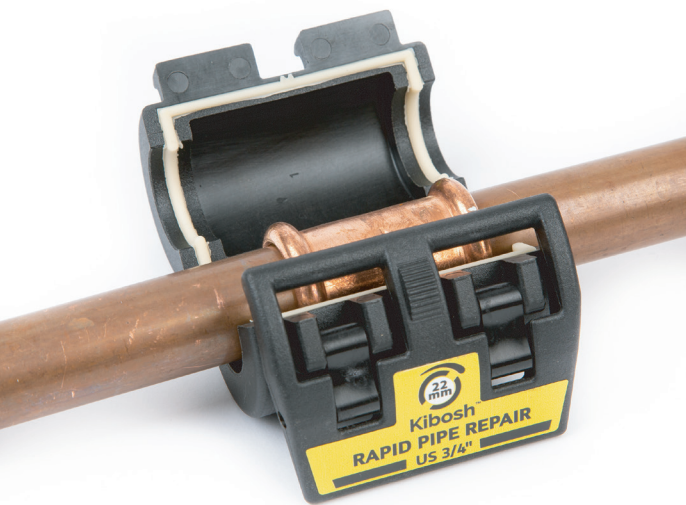
The **Kibosh Rapid Pipe Repair Clamp** is a temporary pipe repair, not a permanent or semi-permanent repair. Although it can last longer, we recommend you arrange a permanent repair within 1 week.

What about swollen burst pipes and leaky fittings?

Kibosh can accommodate swollen burst pipes with large splits and some leaking pipe fittings, in the cavity of the clamp.



Frequently asked questions cont.



Does it work in confined spaces e.g. the notch of a joist?

Yes it does. Just partially close the Kibosh on the pipe, slide it into the joist notch, then fully clamp it shut. You may need to widen the notch in the joist to enable this. (See demo video)

Is it reusable?

Yes it is. As long as the clamp and seal are still in good condition, the **Kibosh Rapid Pipe Repair Clamp** can be reused. Just unclip it from the pipe and put it back in your tool kit. When you put it away, make sure you leave it open, not clamped shut, otherwise you may flatten and damage the seal.

What pressure can the Kibosh Rapid Pipe Repair Clamp withstand?

The **Kibosh Rapid Pipe Repair Clamp** has been tested to withstand up to 10 bar/150 PSI. This is significantly more pressure than in any domestic system, where the average pressure is c.2-3 Bar/29-43 PSI.

Has the Kibosh Rapid Pipe Repair Clamp been tested independently?

Yes. The **Kibosh Rapid Pipe Repair Clamp** has been tested by the British Standards Institute (BSI).

Is it safe to use on domestic water pipes?

The **Kibosh Rapid Pipe Repair Clamp** is made from non-toxic materials.

Can it be used on Central heating pipes?

Yes, it can be used on central heating pipes at high and low temperatures.

Product Details

For the full User Guides and all other important information, please go to www.kiboshpiperepair.com

nine

Kibosh Rapid Pipe Repair Clamps

Product	US/Canada equivalent	Product code	EAN number	Weight	Dimensions Closed clamp as in picture (L x W x D)	Packaging dimensions (L x W x D)
---------	----------------------	--------------	------------	--------	---	-------------------------------------



n/a

KIB15BK-R

5060295
120147

140g

60mm x
70mm x
52mm

190mm x
95mm x
25mm

Kibosh Rapid Repair Clamp in Blister (15mm)



1/2"

KIB16BK-R

5060295
120154

140g

60mm x
70mm x
52mm

190mm x
95mm x
25mm

Kibosh Rapid Repair Clamp in Blister (16mm | US/Canada 1/2")



3/4"

KIB22BK-R

5060295
120161

160g

63mm x
70mm x
62mm

190mm x
95mm x
25mm

Kibosh Rapid Repair Clamp in Blister (22mm | US/Canada 3/4")



3/4"

KIBKITO-R

5060295
120178

470g
with
contents

63mm x
70mm x
62mm

230mm x
190mm x
45mm

Kibosh Leak Repair Kit - UK and Metric System (1 x 15mm & 1 x 22mm + 2 rolls of PTFE Tape)



1/2"
&
3/4"

KIBKITO-RNA

5060295
120178

470g
with
contents

63mm x
70mm x
62mm

230mm x
190mm x
45mm

Kibosh Leak Repair Kit - North American System (1 x 16mm/US 1/2" & 1 x 22mm/US 3/4" + 2 rolls of PTFE Tape)



The Kibosh™ **FASTFREEZE™** range

The Kibosh FASTFREEZE™ is an extremely fast and efficient pipe freezing system which requires less freezing gas than foam sleeves to achieve and maintain an isolating ice plug.

Pipe freezing can be frustrating, expensive or both with variable success. High-end kits are very expensive and are a big investment for something which you may not need to use very often.

Basic freeze kits are available but the foam sleeves which go round the pipes are very inefficient and awkward to use.

The Kibosh FASTFREEZE™ range use the patented Kibosh FASTFREEZE™ clamps to deliver a faster, simpler and more efficient freeze.

The freeze gas is injected into this sealed cavity containing contact foam, resulting in a very focused freeze. This system uses less gas than other methods because the sealed clamp ensures no gas is wasted.

As a result, you will get a much faster freeze and can fully freeze a 15mm copper pipe within 3-5 minutes.

How it works

Kibosh FASTFREEZE™ system



1 Open the clamp and fit it round the pipe.



2 Make sure the inlet hole is below the vent hole.



4 Insert the straw into the inlet hole, again making sure the inlet hole is BELOW the exit hole.



5 Gently spray the freeze gas into the clamp, not full bursts!



3

Attach the straw to the FASTFREEZE spray nozzle.

eleven



6

Once frozen sufficiently, work can commence.



**Bish, Bash,
Kibosh™
- job done**

Freezing guide

For the Kibosh FASTFREEZE™ pipe freezing system

Pipe size	Freeze spray required	Ice plug formation	Ice plug life
15mm Copper/steel	90g	3-5 mins	20 mins
22mm Copper/steel	145g	5-6 mins	25 mins

Available Sizes

The Kibosh FASTFREEZE™ clamps can accommodate 8-10mm, 14-16mm which includes USA/CAN ½" and 21-22mm pipes which includes USA/CAN ¾" and ½" steel pipes.

Frequently asked questions

Which pipes does Kibosh FASTFREEZE™ work on?

The **Kibosh FASTFREEZE™** Clamp works on most types of pipe – copper, steel, plastic*, iron. (*plastic pipe requires at least 50% more freeze spray).

Can the Kibosh FASTFREEZE™ clamps be used with other available pipe freezing sprays?

Yes, **Kibosh FASTFREEZE™** clamps can be used with and have the same inlet straw size as most leading pipe freeze sprays on the UK market.

FASTFREEZE spray can also be used with other pipe freezing products in the market.

**Compatible for use with most freezing solutions- designed for use with R-1234ze & R-134a.*

Does it work in tight spaces and on clipped pipes?

Yes it does. The **Kibosh FASTFREEZE™** clamps are designed for use on clipped pipes and can be fitted in tight confined spaces.

Is it reusable?

Yes it is. The **Kibosh FASTFREEZE™** Clamps are designed to be re-used. The contact foam is also suitable for multiple uses. Just follow the user instructions that come with every kit and on www.kiboshpiperepair.com

What temperature will the FASTFREEZE kit achieve?

The **Kibosh FASTFREEZE™** spray can achieve -30°C.

Is FASTFREEZE spray bad for the environment?

Kibosh FASTFREEZE™ spray is the new more environmentally friendly R-1234ze with Low Global Warming Potential.



Product Details

Kibosh FASTFREEZE™ system

For the full Safety Data Sheet, User Guides and all other important information, please go to www.kiboshpiperepair.com

Name	US/Canada equivalent	Product code	EAN number	Weight	Product Dimensions closed clamp (L x W x D)	Packaging dimensions (L x W x D)
------	----------------------	--------------	------------	--------	---	-------------------------------------



1/2"

KIB15BE-F

n/a

105g
clamp only60mm x
70mm x
52mm

n/a

Kibosh FASTFREEZE™ 15mm clamp only (14-16mm | US/Canada 1/2")



3/4"

KIB22BE-F

n/a

125g
clamp only63mm x
70mm x
62mm

n/a

Kibosh FASTFREEZE™ 22mm clamp only (21-22mm | US/Canada 3/4")



1/2"

KIB15FF-F

5060295
120123

135g

60mm x
70mm x
52mm190mm x
95mm x
25mm

Kibosh FASTFREEZE™ 15mm clamp in Blister including reducers, contact foam & straw (8-16mm | US/Canada 1/2")



3/4"

KIB22FF-F

5060295
120130

145g

63mm x
70mm x
62mm190mm x
95mm x
25mm

Kibosh FASTFREEZE™ 22mm clamp in Blister including contact foam & straw (21-22mm | US/Canada 3/4")

Product Details

Kibosh FASTFREEZE™ system

For the full Safety Data Sheet, User Guides and all other important information, please go to www.kiboshpiperepair.com



Name	US/Canada equivalent	Product code	EAN number	Weight	Product Dimensions (L x W x D)	Packaging dimensions (L x W x D)
------	----------------------	--------------	------------	--------	--------------------------------	----------------------------------



n/a

KIBTPV-F

n/a

n/a

15mm x
7mm x
10mm

n/a

Kibosh FASTFREEZE™ 8-10mm reducing inserts for 15mm clamp



n/a

KIBSP176-F5060295
120116**275g**
total weight**176g**
fluid weight163mm x
65mm x
65mm

n/a

Kibosh FASTFREEZE™ spray small (176g)



n/a

KIBSP293-F5060295
120109**410g**
total weight**293g**
fluid weight223mm x
65mm x
65mm

n/a

Kibosh FASTFREEZE™ spray large (293g)



1/2"

KIBKIT1-F5060295
120048**435g**
total weight**176g**
fluid weight180mm x
120mm x
80mm180mm x
120mm x
80mm

Kibosh FASTFREEZE™ kit 1 - 1 x 15mm FASTFREEZE clamp, 1 x small FASTFREEZE spray (8-16mm | US/Canada 1/2")

fifteen

Kibosh FASTFREEZE™ kit 6 - 2 x 15mm, 2 x 22mm FASTFREEZE clamps, 2 x large FASTFREEZE sprays (8-22mm | US/Canada ½" & ¾")

Accreditations and Awards

www.kiboshpiperepair.com



British Plastics Federation

British Plastics Federation and Horner's Fellowship
Highly Commended Certificate for Innovation 2012



Australian International
Design Awards
Good Design Award 2013



SCAN
for demo video

Contact

www.kiboshpiperepair.com

Kibosh Ltd

Unit 9 Huddersfield Street
Galashiels
Scotland
United Kingdom
TD1 3BF

Tel: +44 (0)1896 753571

Mob: +44 (0)7515 449515

Email: sales@kiboshinnovation.co.uk

