

# V-Seal<sup>®</sup> pipe flashings

AD series pipe flashings

## Application

- Provides weatherseal for pipes, chimneys, flues and other penetrations through profiled sheeting or flat panel systems

## Key Features

- Square base facilitates easy installation
- Adaptability - suits standard and retro-fit applications
- Flexibility - allows for expansion, contraction and building movement
- Simple to fit sleeve marked with pipe diameters
- Life expectancy in excess of 20 years under normal weather conditions

## Datasheet

Document Reference: DS-RP-AD-7.17/01

04 ROOF TOP PRODUCTS  
V-Seal<sup>®</sup> AD series pipe flashings

# V-Seal® AD series pipe flashings

code			Pipe diameters(mm)		Base dimensions (mm)	For retro-fit applications only Quantity of RFC clips required per flashing
Black EPDM Temp range -40°C to + 115°C	Grey EPDM Temp range -40°C to + 115°C	Red Silicone Temp range -50°C to +240°C	0-25° roof pitch	0-45° roof pitch		
AD-EB-10-90	AD-EG-25-70*	AD-SR-10-90	10-90	10-70	155 x 155	5
AD-EB-50-100	AD-EG-50-100	AD-SR-50-100	50-100	50-80	210 x 210	4
AD-EB-75-150	AD-EG-90-150**	AD-SR-75-150	75-150	75-135	255 x 255	6
AD-EB-125-200	AD-EG-125-200	AD-SR-125-200	125-200	125-165	313 x 313	5
AD-EB-150-250	AD-EG-150-250	AD-SR-150-250	150-250	150-230	370 x 370	6
AD-EB-195-300	AD-EG-195-300	AD-SR-195-300	195-300	195-255	440 x 440	7
AD-EB-230-380	-	AD-SR-230-380	230-380	230-355	540 x 597	9
AD-EB-315-500	-	AD-SR-315-500	315-500	315-450	650 x 720	11
AD-EB-400-750	-	AD-SR-400-750	400-750	400-630	965 x 995	15

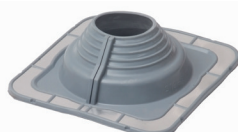
\*AD-EG-25-70  
\*\*AD-EG-90-150

25-70  
90-150

25-65  
90-130



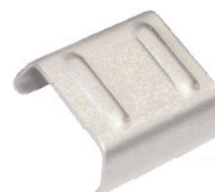
AD-SR



AD-EG



AD-EB



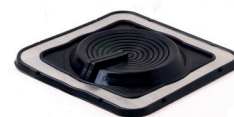
VSRFC

code	Description
VSRFC	For retro-fit applications AD-series flashings can be cut open down the seam and crimped together using VSRFC Clips

code	Black EPDM Temp range -40°C to + 115°C	Pipe diameters(mm)		Base dimensions (mm)	For retro-fit applications only Quantity of RFC clips required per flashing
		0-25° roof pitch	0-45° roof pitch		
AD-EB-SQ-25-100	Purpose designed to suit square section penetrations	25-100	25-75	210 x 210	5
AD-EB-SQ-100-150		100-150	100-150	313 x 313	6
AD-EB-WF-0-125	Special flat cone for use on vertical cladding	0-125	0-125	210 x 210	4



AD-EB-SQ



AD-EB-WF

# V-Seal® AD series pipe flashings

## For Sheetting & Cladding

Product size selector												
Pipe diameter (mm)	MS Series		AD Series									Stripflash
	3-25	5-50	10-90	50-100	75-150	125-200	150-250	195-300	230-280	315-500	400-750	
3	✓	✓	-	-	-	-	-	-	-	-	-	-
5	✓	✓	-	-	-	-	-	-	-	-	-	-
10	✓	✓	✓	-	-	-	-	-	-	-	-	-
25	*	✓	✓	-	-	-	-	-	-	-	-	-
30	-	✓	✓	-	-	-	-	-	-	-	-	-
40	-	✓	✓	✓	-	-	-	-	-	-	-	-
50	-	*	✓	✓	-	-	-	-	-	-	-	-
60	-	-	✓	✓	-	-	-	-	-	-	-	-
70	-	-	✓	✓	-	-	-	-	-	-	-	-
80	-	-	*	✓	✓	-	-	-	-	-	-	-
90	-	-	*	✓	✓	-	-	-	-	-	-	-
100	-	-	-	*	✓	-	-	-	-	-	-	-
125	-	-	-	-	✓	✓	-	-	-	-	-	-
150	-	-	-	-	*	✓	✓	-	-	-	-	-
175	-	-	-	-	-	✓	✓	-	-	-	-	-
200	-	-	-	-	-	*	✓	✓	-	-	-	-
225	-	-	-	-	-	-	✓	✓	-	-	-	-
250	-	-	-	-	-	-	*	✓	-	-	-	-
275	-	-	-	-	-	-	-	*	✓	-	-	-
300	-	-	-	-	-	-	-	*	✓	-	-	✓
325	-	-	-	-	-	-	-	-	✓	✓	-	✓
350	-	-	-	-	-	-	-	-	✓	✓	-	✓
375	-	-	-	-	-	-	-	-	*	✓	-	✓
400	-	-	-	-	-	-	-	-	-	✓	✓	✓
425	-	-	-	-	-	-	-	-	-	✓	✓	✓
450	-	-	-	-	-	-	-	-	-	✓	✓	✓
500	-	-	-	-	-	-	-	-	-	*	✓	✓
550	-	-	-	-	-	-	-	-	-	-	*	✓
600	-	-	-	-	-	-	-	-	-	-	*	✓
650	-	-	-	-	-	-	-	-	-	-	*	✓
700	-	-	-	-	-	-	-	-	-	-	*	✓
750	-	-	-	-	-	-	-	-	-	-	*	✓

✓ Suitable \* Suitable on lower pitches - Not suitable

**FIXFAST Ltd | Merlin House | Seven Mile Lane | Borough Green | Sevenoaks | Kent | TN15 8QY**  
**T: 0845 450 7483 | F: 0845 450 7486 | E: info@fixfast.com | W: www.fixfast.com**

Fixfast is a trading name of FIXFAST Ltd which is a company registered in England & Wales with number 09481218.  
 The registered office is Fixfast, Merlin House, Seven Mile Lane, Borough Green, Sevenoaks, Kent, United Kingdom TN15 8QY

©Fixfast September 2017. All rights reserved. Due to a policy of continual development, Fixfast reserves the right to change product specification and descriptions without prior notice.



Certificate Number 10905  
 ISO 9001: 2008  
 ISO 14001: 2004  
 BS OHSAS 18001: 2007