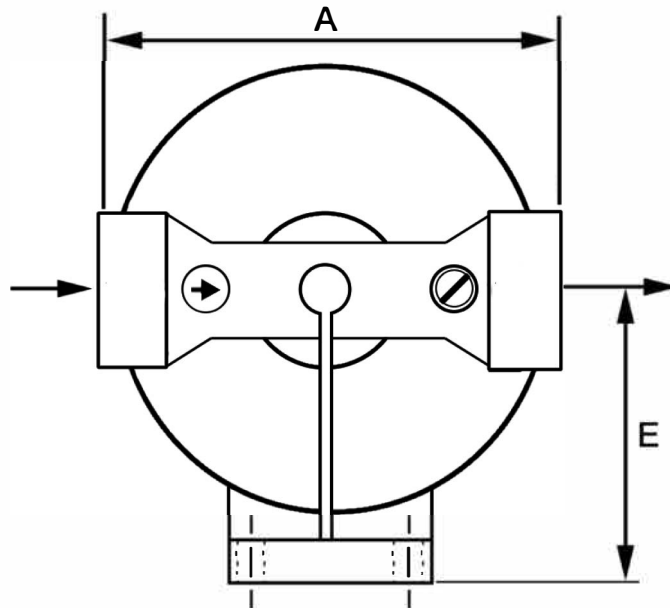
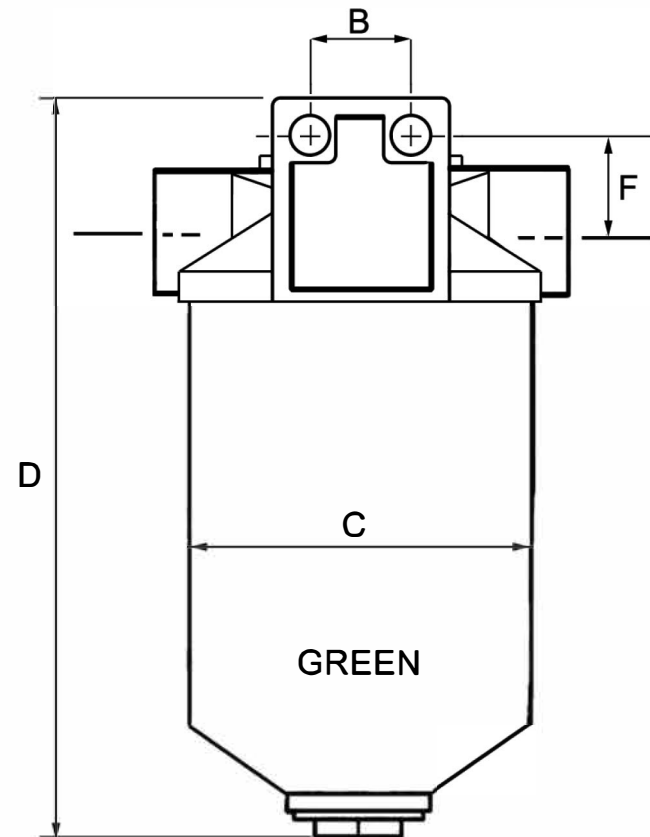


Bio Fuel Filter Assembly



Bio fuel filter assemblies covers a wide range of applications from industrial heating, marine & plant vehicles. To meet these varied requirements, the filter media & Viton seals have been developed to resist bio mixture up to 50%. To allow for adjustment outside normal servicing intervals most assemblies include air bleed.

Filter Element has a Nominal Micron Grade of 10 Microns Tested under the following conditions.

Oil: Esso Univas J13

Temp: 200cm2

Flow Rate 2.5-5 l/min

Dust Feed: 100ml/min

(Dust Conc. (mg/ml) / DHC)

Housing No	Filter No	Flow (L/Hour)	Working Pressure (kg/cm ²)	Inlet/Outlet	Dimensions (mm)					
					A	B	C	D	E	F
F02-18493-B	F02-493-B	27(Kero)/22.5(Oil)	3.5	1/4"BSPT	77.0	24.0	64.0	153.0	46.5	19.0

NOTE: - **Flow Rate:** **Maximum recommended flow rate based on clean fluid conditions**

All relevant viton seals are normally included with the replacement filter