



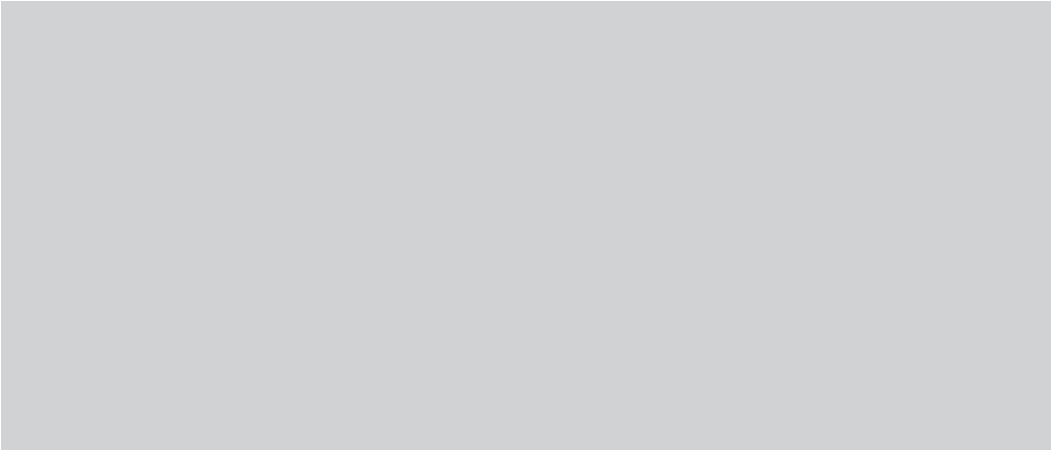
# INSTALLATION INSTRUCTION



## AFTERCARE

Whilst modern plating techniques are used in the manufacture of this product , the surface will be affected if cleaned incorrectly.

Surfaces should be maintained using a clean damp cloth ,no abrasive agents or materials should be used or come into contact with the surface finish , or this will invalidate your guarantee.



## FEATURE & FUNCTION

Thank you for choosing our electronic automatic faucet.

### ● WATER SAVING

When your hands enter the sensing range ,the indicator light in the sensor window will shine ,then water flows out and stops immediately once you draw them back.

### ● HYGIENIC

Automatic on/off to free hands from any touching ,avoiding bacteria infection ,which is more convenient and hygienic.

### ● INTELLIGENT

Adopts the micro-computer controlling,the faucet can self-adjust the best detection zone and has the function of anti-light and anti-ultraviolet rays .

### ● AUTOMATIC PROTECTION

Automatically stops after 70 seconds to avoid water wasting.

If more water required,draw back your hands for 4 seconds , the water will flow out again.

### ● POWER CUT AVAILABLE

In the event of power failure,this product will automatically switch to battery power.

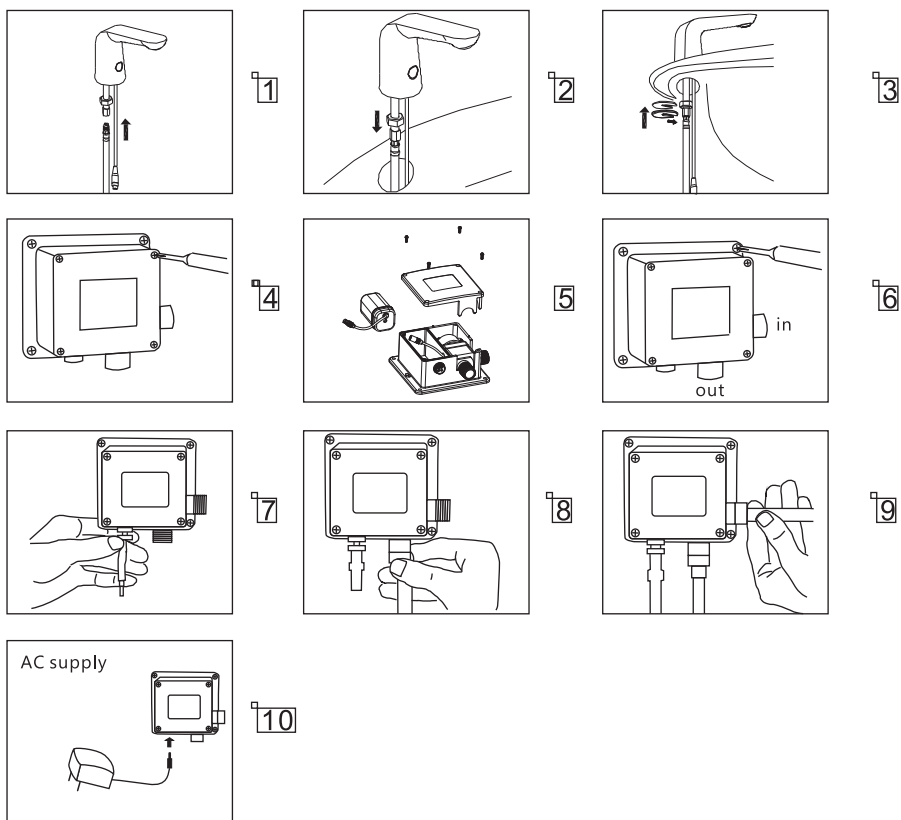
The automatic faucet is manufactured strictly by the ISO9001 standard.  
Our company has the right of updating the product technology.

## MALFUNCTION & DISPOSAL

Description	Malfunction Cause	Treatment
no water out	the battery is exhausted(DC item)	change the battery
	water supply cut off	check supply
	dirt in the filter	clean the filter
	water pressure is too low	raise the pressure
water will not turn off	dirt on the sensor window	clear the dirt
too little water flow	water supply is turned too small	adjust water supply
	the filter is too dirty	clean the filter
	water pressure is too low	raise the pressure
too much water flow	water supply is turned too high	adjust supply
	water pressure is too high	adjust pressure
short cycles of battery	incorrect batteries	change to 4AA alkaline battery
the indicator light is not on	the light is broken	change the light or circuitry board
	the circuitry board is wet or signal line is wet	dry out
	the battery is exhausted	change the battery
	poor connection of battery	check the battery connection

## INSTALLATION STEP

Step :



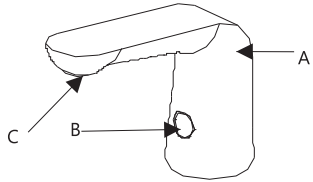
1. Screw in flexible hose to faucet body.
2. Insert faucet rubber gasket.
3. Place faucet on basin and fix using horseshoe washers and nuts.
4. Open control box and install 4AA battery.
5. Fix control box close to faucet(ensure flexible hose will connect), using plugs and screws provided.(4-6DC)
7. Insert mainframe connector from faucet to mainframe connector socket ,screw tightly.
8. Connect flexible hose from faucet to control box (out).
9. Connect control box(in) to water supply.
10. Connect transformer to control box and AC supply.  
Turn on water and test.

## TECHNICAL SPECIFICATION

Model No.	201LT22
Power supply	AC: 220V-240V/50Hz DC: 4 AA alkaline batteries
Water pressure	0.05MPa~0.8MPa
Water temperature	≤75℃
Inlet pipe size	G1/2 (DN15)
Opening and closing time	Open: ≤1s; Close: ≤1.5s
Timeout protection	If used for a long time over 60±10%, the water will be turned off automatically
Sensing distance	32cm±10% (for standard whiteboard)
Power consumption	AC: Standby mode≤2W; Work mode≤4W DC: Standby mode≤0.2mW

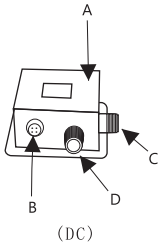
## PARTS NAME

### Faucet Body



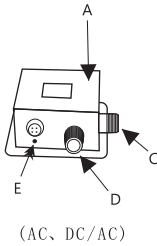
- A. Body
- B. Sensor Window
- C. Spout

### Control Box



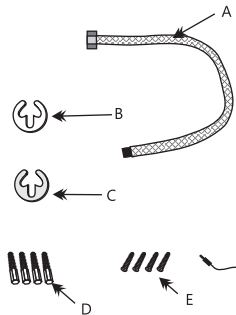
- A. Plastic Control Box
- B. Mainframe connector Socket
- C. Water Inlet(with Filter)
- D. Water Outlet
- E. Transformer Connector

(DC)



(AC, DC/AC)

### Part



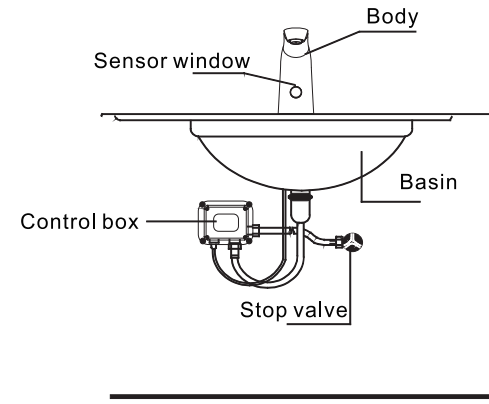
- A. Flexible Hose
- B. Rubber Horseshoe
- C. Brass Horseshoe
- D. Plastic Bulged Tube
- E. Screw
- F. Transformer (AC/AC+DC)

## INSTALLATION MAP

### Note:

Always flush pipework before installation.

The installation place which you choose and design should be sunless and lightless.



Installation for AC,AC/DC

